



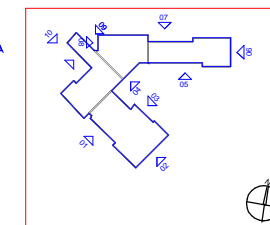
HAVERSTOCK SCHOOL



KAJIMA CONSTRUCTION EUROPE (UK) LTD

PO Box 45545
Site Office
Chalk Farm
London NW5 3UZ

Tel : 020 7428 9512
Fax : 020 7267 5873



f o r c o m m e n t

Job/Drawing No Amendment

GROUND FLOOR SPACE NUMBERS
KCE K 0500 100

Scale
Date 30 July 2004

d r a w i n g d e s c r i p t i o n

Space Numbers

Do not scale

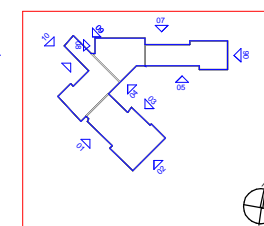
All dimensions to be checked on site



HVERSTOCK SCHOOL



KAJIMA CONSTRUCTION
EUROPE (UK) LTD
PO Box 45545
Site Office
Chalk Farm
London NW5 3UZ
Tel : 020 7428 9512
Fax : 020 7267 5873



f o r c o m m e n t

Job/Drawing No: KCE K 0500 101
Amendment: Scale: Date: 30 July 2004

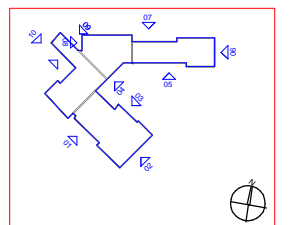
d r a w i n g d e s c r i p t i o n
Space Numbers
Do not scale All dimensions to be checked on site



Haverstock School



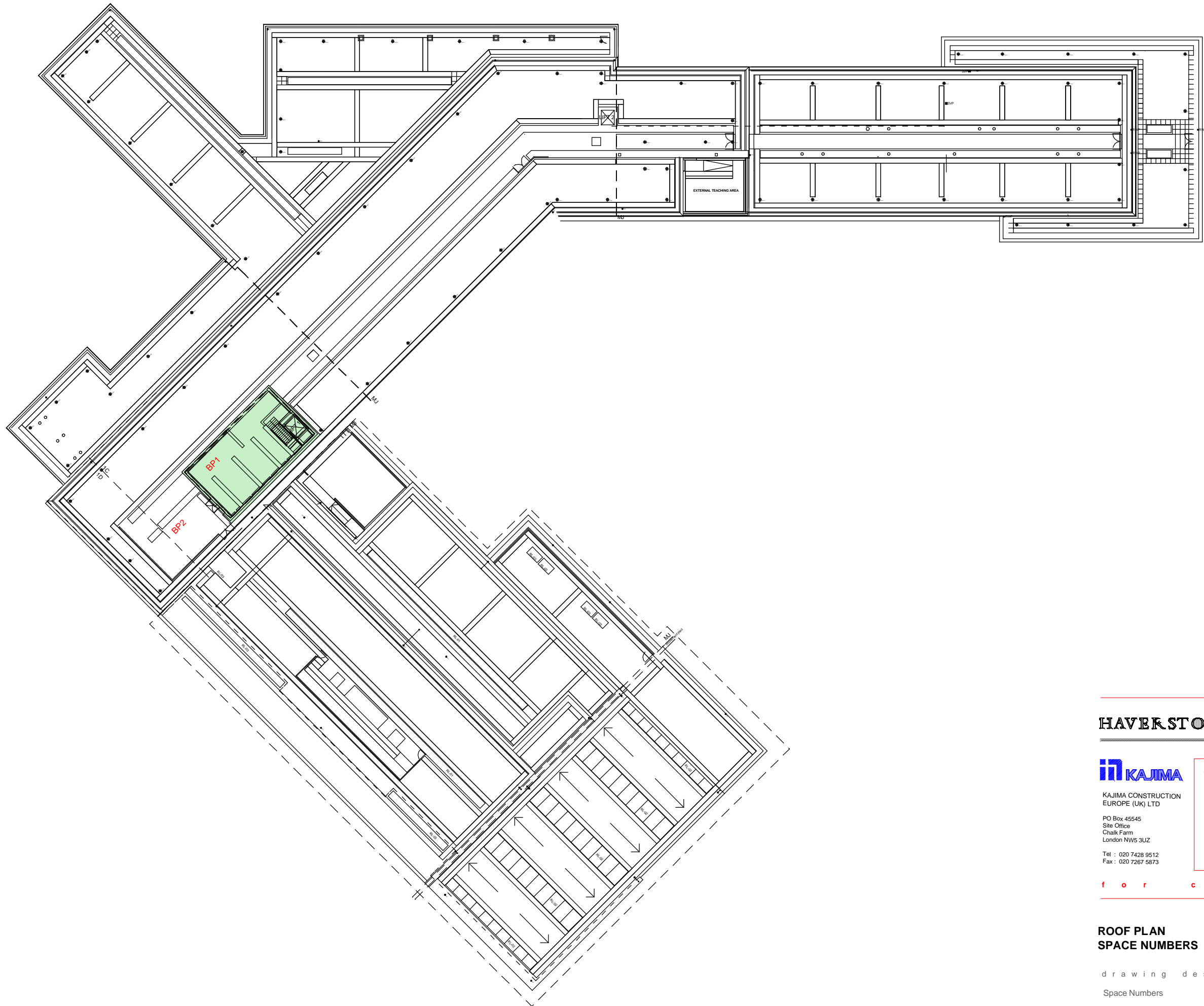
KAJIMA CONSTRUCTION
EUROPE (UK) LTD
PO Box 45545
Site Office
Chalk Farm
London NW5 3UZ
Tel : 020 7428 9512
Fax : 020 7267 5873



f o r c o m m e n t

Job/Drawing No Amendment
SECOND FLOOR SPACE NUMBERS KCE K 0500 102
Scale
Date 30 July 2004

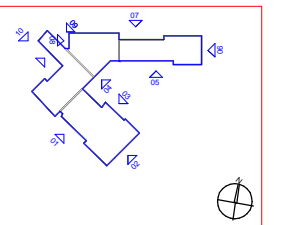
d r a w i n g d e s c r i p t i o n
Space Numbers
Do not scale All dimensions to be checked on site



HAVERSTOCK SCHOOL



KAJIMA CONSTRUCTION
EUROPE (UK) LTD
PO Box 45545
Site Office
Chalk Farm
London NW5 3UZ
Tel : 020 7428 9512
Fax : 020 7267 5873



f o r c o m m e n t

Job/Drawing No **KCE K 0500 103** Amendment
ROOF PLAN
SPACE NUMBERS
 Scale
 Date 30 July 2004

d r a w i n g d e s c r i p t i o n
 Space Numbers
 Do not scale All dimensions to be checked on site